



HEZLETT GARDENS
KELLYVILLE

HOUSE AND LAND PACKAGE

Lot 26 | Hezlett Gardens | Kellyville

\$1,024,000



CORELLA 24
TREND MK2 FACADE

4	2.5	2
BEDROOMS	BATHROOMS	CAR GARAGE



Images and colours are shown for illustrative purposes and may not always represent the final product. Area, depth, width and layout may vary slightly depending on facade and site conditions. Design and prices may be subject to conditions of developer and/or Council approval. Eaves may change due to Council condition and/or zero lot location. Land size is subject to change pending on DA approval and land registration. Australian House and Land has the right to alter prices and inclusions without prior notice.

All designs are copyright to Australian House and Land.

Land Price: \$640,000

Date issued: 21.12.17

HOUSE AND LAND PACKAGE

Lot Number: 26

Hezlett Gardens

Land Size: 374.5m²

External Colour: Chai

Internal Colour: Harmony

House Design: Corella 24

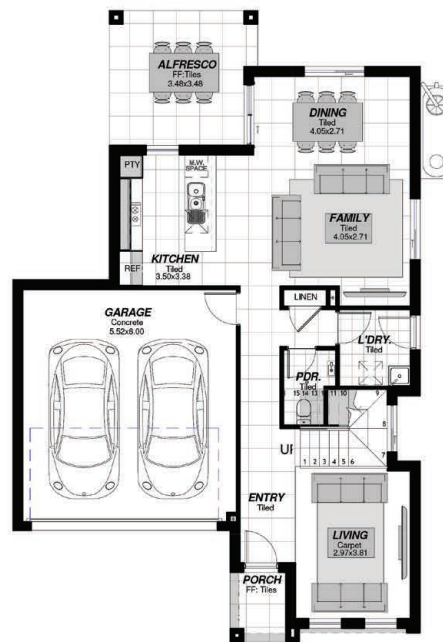
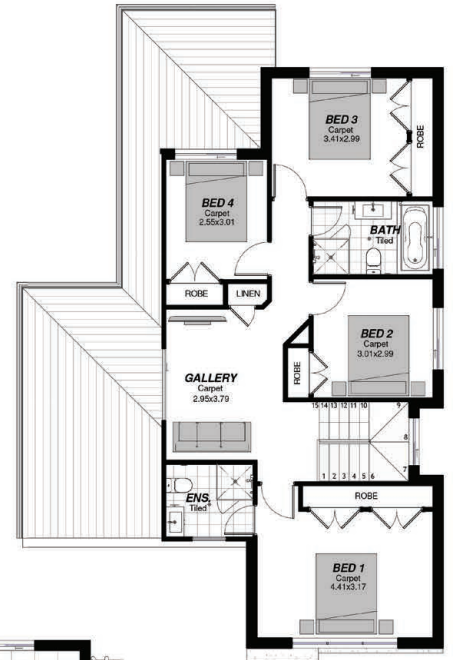
Facade: Trend MK2

House Area: 220.23m²

Width: 16.31m

Depth: 10.52m

Inclusions: Classic



4

BEDROOMS

2.5

BATHROOMS

2

CAR GARAGE

Spectrum Upgrades:

- Soft landscaping - turf and basic garden beds.
- Coloured on concrete driveway and path. (Where applicable)
- Fold down clothesline.
- Face brick pier with built in letterbox.
- Fencing. (Estate design guidelines apply)
- Sarking to underside of roof tiles.
- 1x Split system air conditioner to main living.
- Remote control unit to garage door.
- TV antennae.
- Flyscreens to operable windows and sliding doors.
- Tiling and carpet throughout. (as per plan - Selection from standard range)
- Engineered stone bench tops to kitchen - 20mm edge.
- Stainless steel dishwasher.
- Vertical blinds to all windows and sliding doors. (Excl. wet areas)
- Oyster light fittings to ground floor living areas.
- Fluorescent light fitting to garage.
- 3 coat paint system in Taubmans Endure.
- Alarm System.